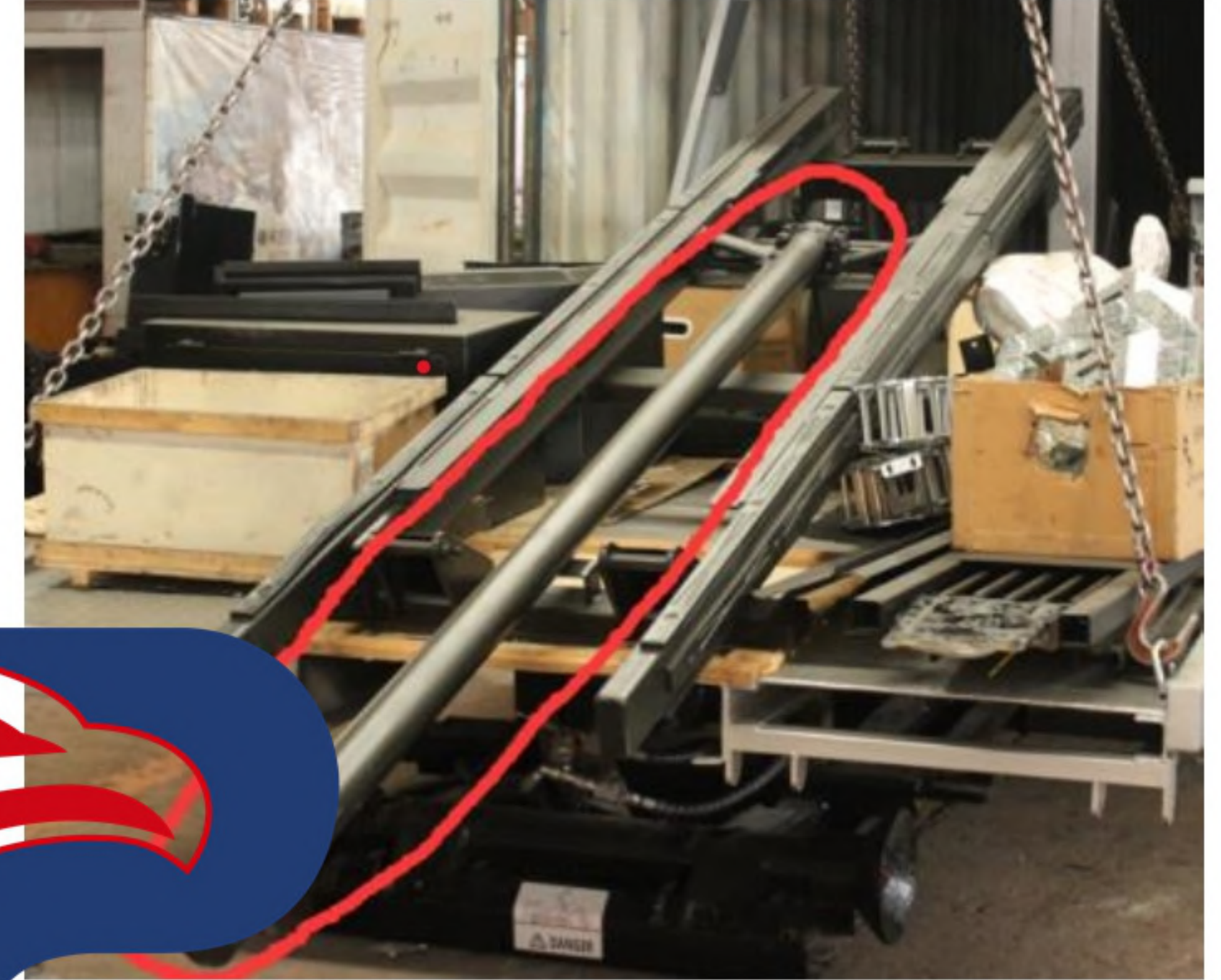


Slide Wrecker Truck Installation

Before installation, please note that totally 8 units hydraulic cylinder for the wrecker kit:

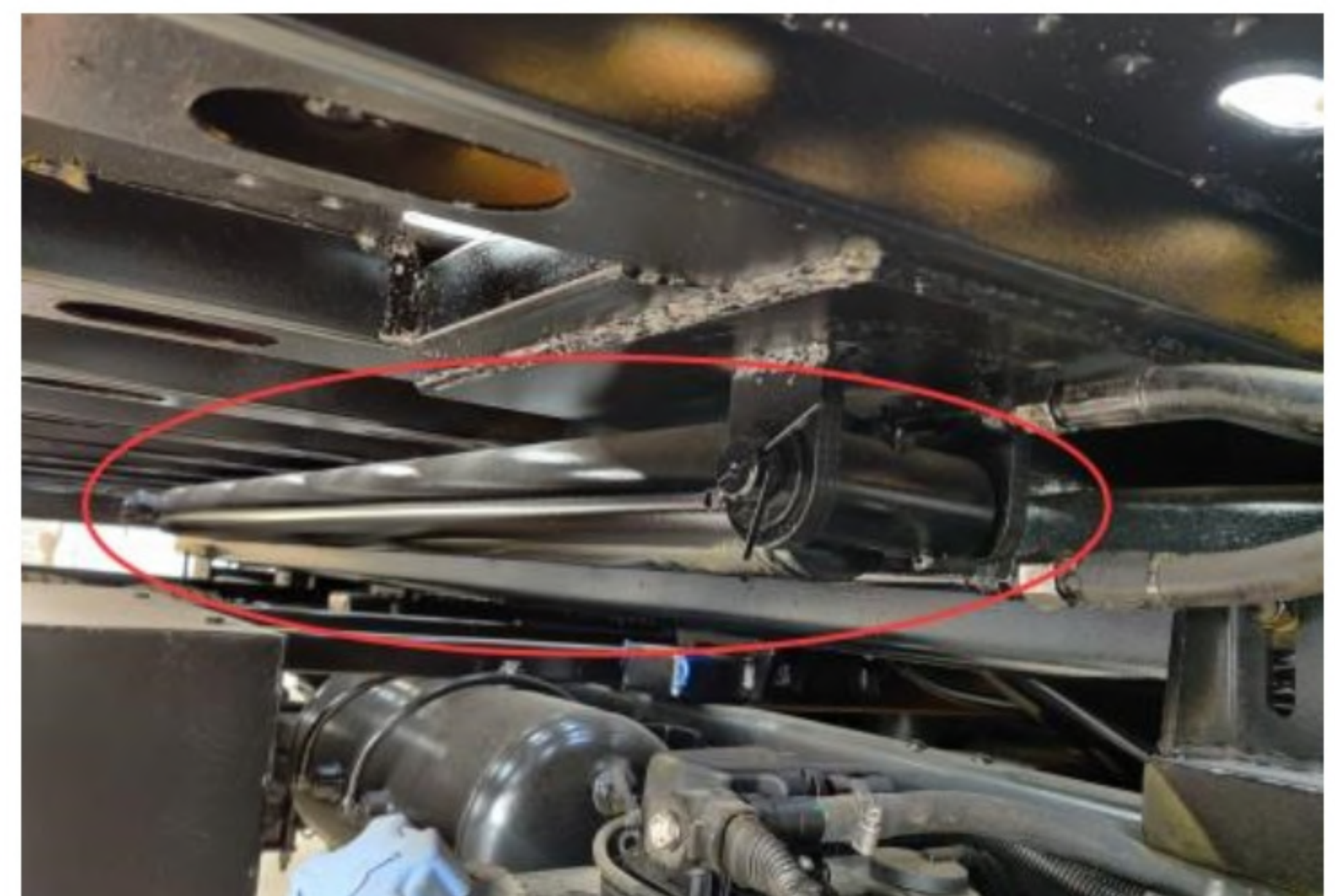
Wrecker Platform----Telescopic Hydraulic Cylinder*1



Wrecker Platform----Lifting Hydraulic Cylinder*2



Rear Platform---- Telescopic Hydraulic Cylinder*2



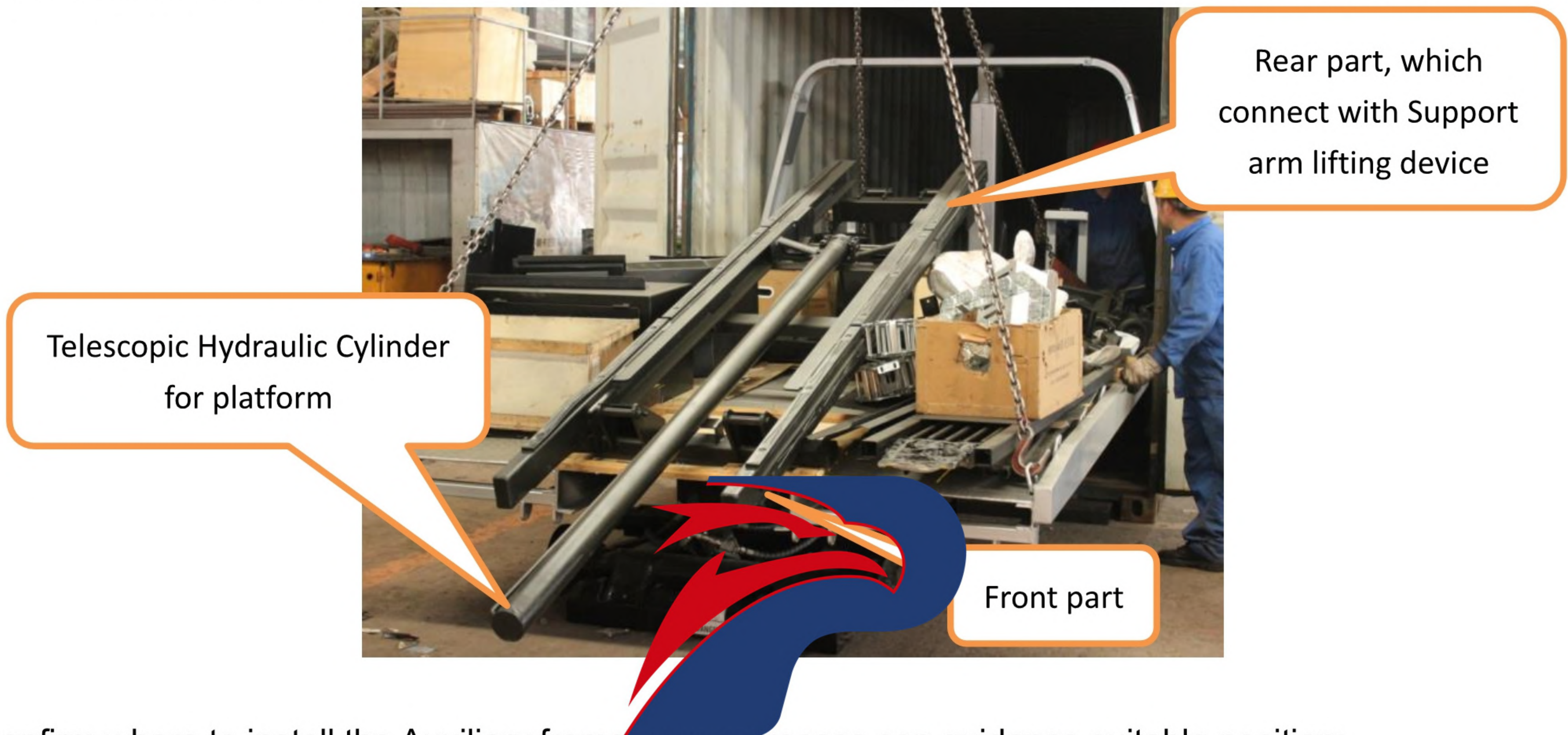
Rear Lifting Part---- Lifting Hydraulic Cylinder*2



Rear Lifting Part---- Telescopic Hydraulic Cylinder*1



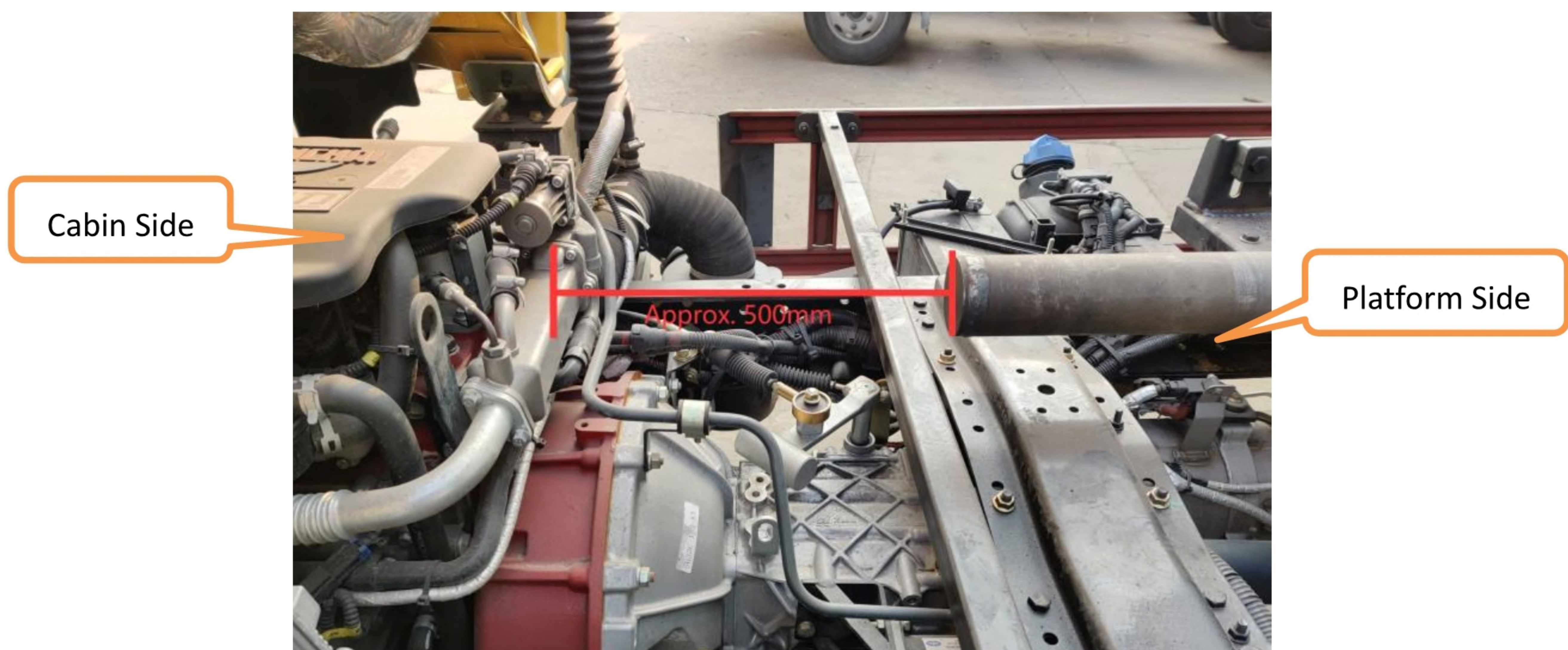
1. Collection the Slide Wrecker Superstructure Auxiliary Frame with ISUZU NQR truck chassis



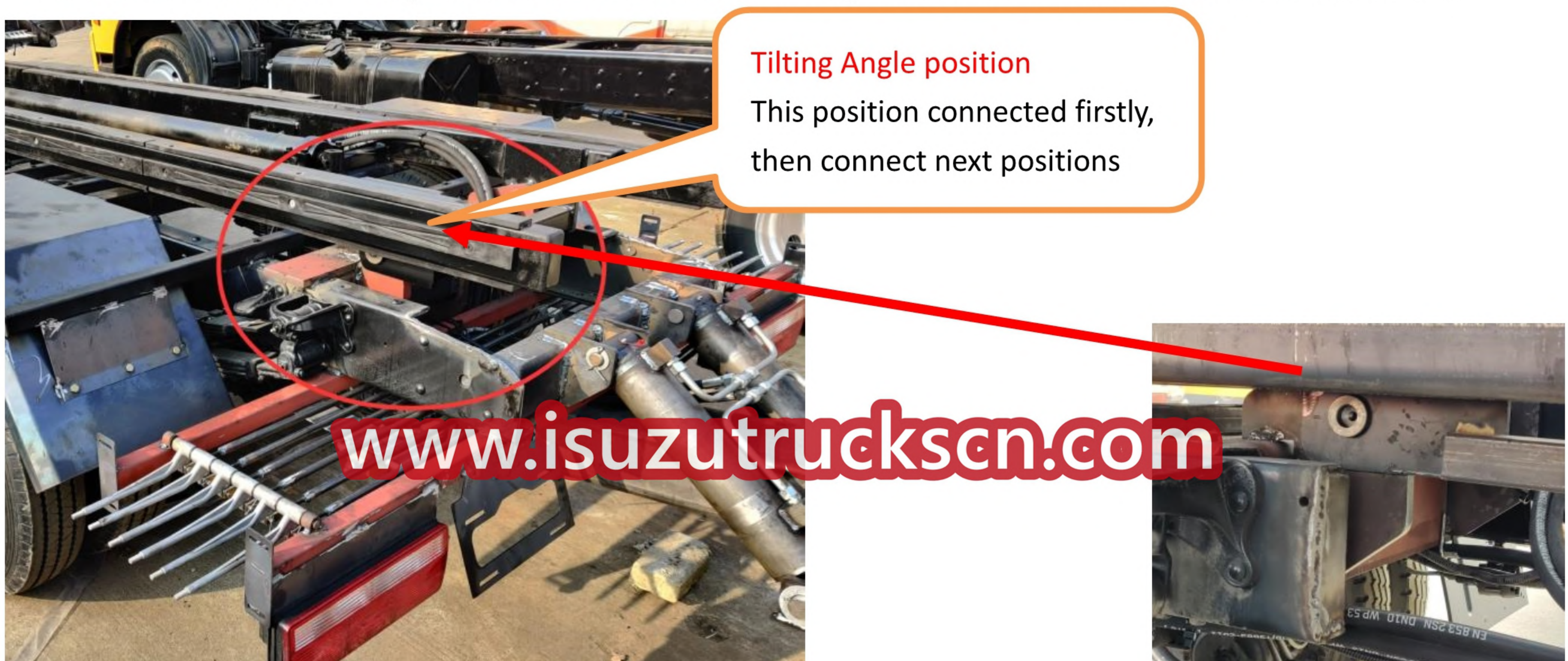
To confirm where to install the Auxiliary frame, below process can guidance suitable position:

POWERSTAR

- Leave **500mm distance** between cabin and telescopic Hydraulic Cylinder front part. And then install the auxiliary frame on NQR chassis

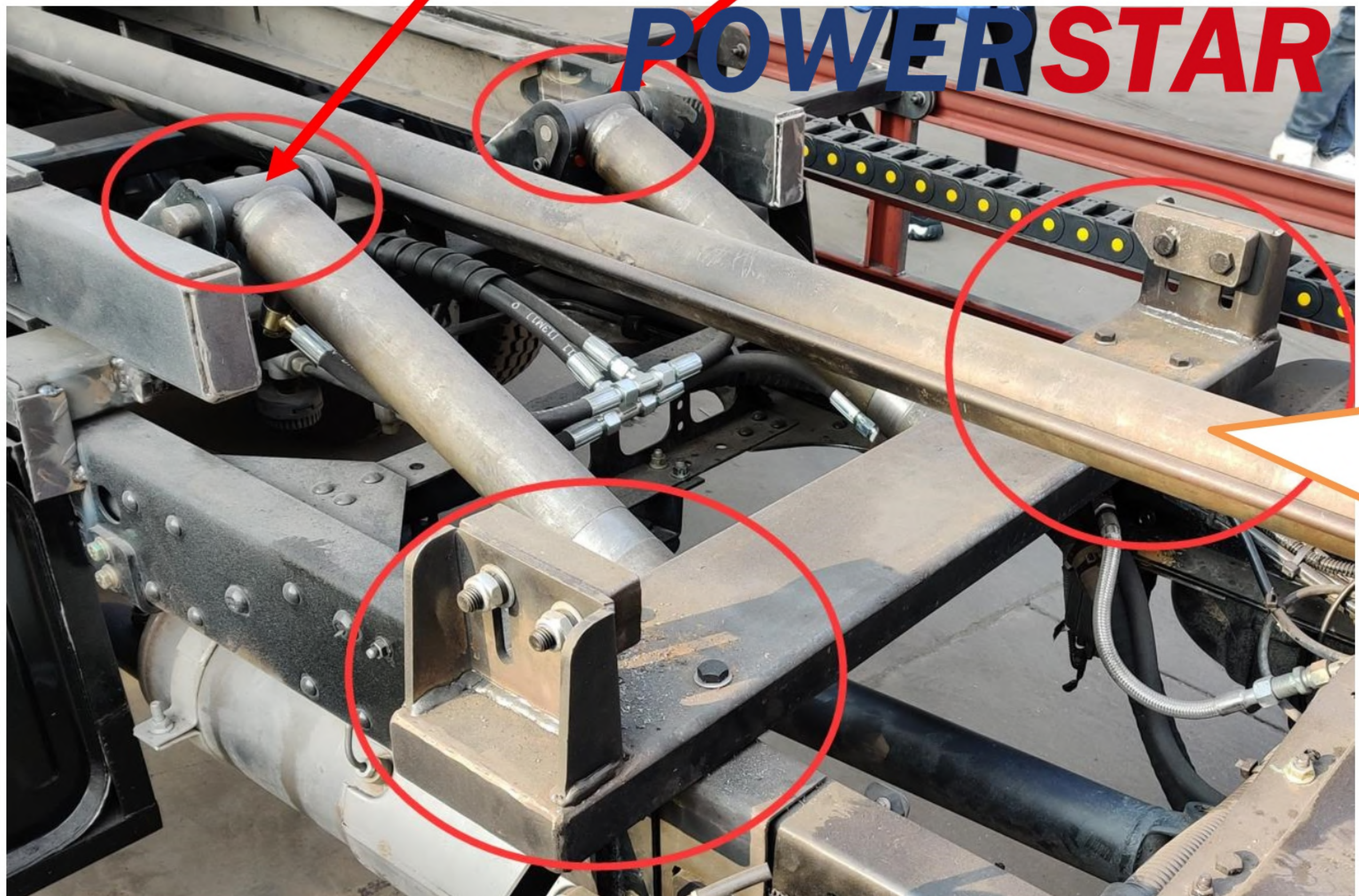
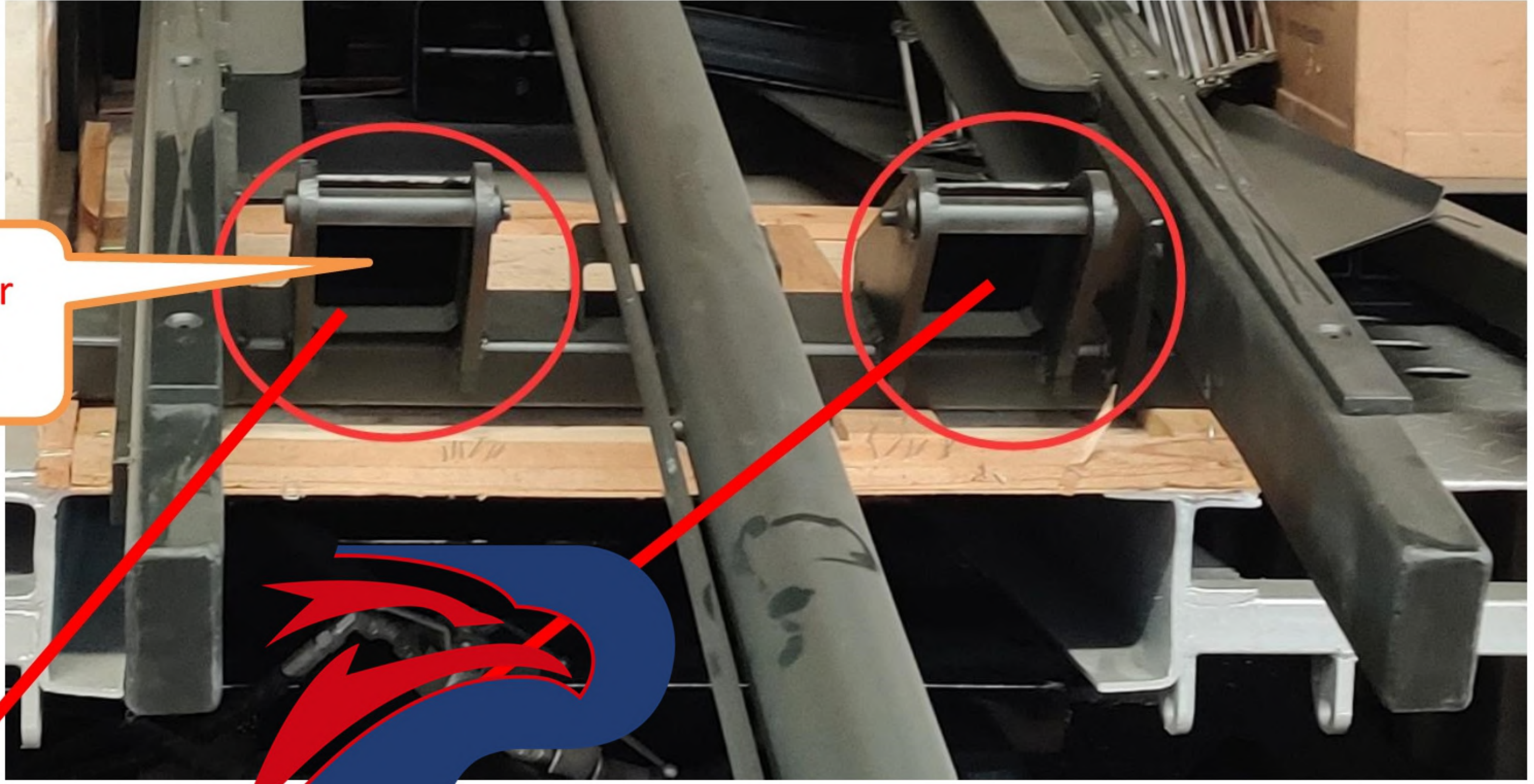


- When front 500mm distance left, second step is confirming the rear **Tilting Angle Position**. Cut off the NQR chassis frame if necessary. And then make sure Auxiliary Frame and NQR Frame well connected.



- When **Tilting Angle Position** well installed, next step is installing the **lifting hydraulic cylinder** for wrecker platform. Make sure all connection position solid and safe.

Lifting Hydraulic Cylinder for Wrecker Platform Positions



Lifting Hydraulic Cylinder for Wrecker Platform:
One side connect with Auxiliary Frame, and one side connect with chassis Frame

- When **Auxiliary Frame** well installed, install the Control system below NQR chassis frame.



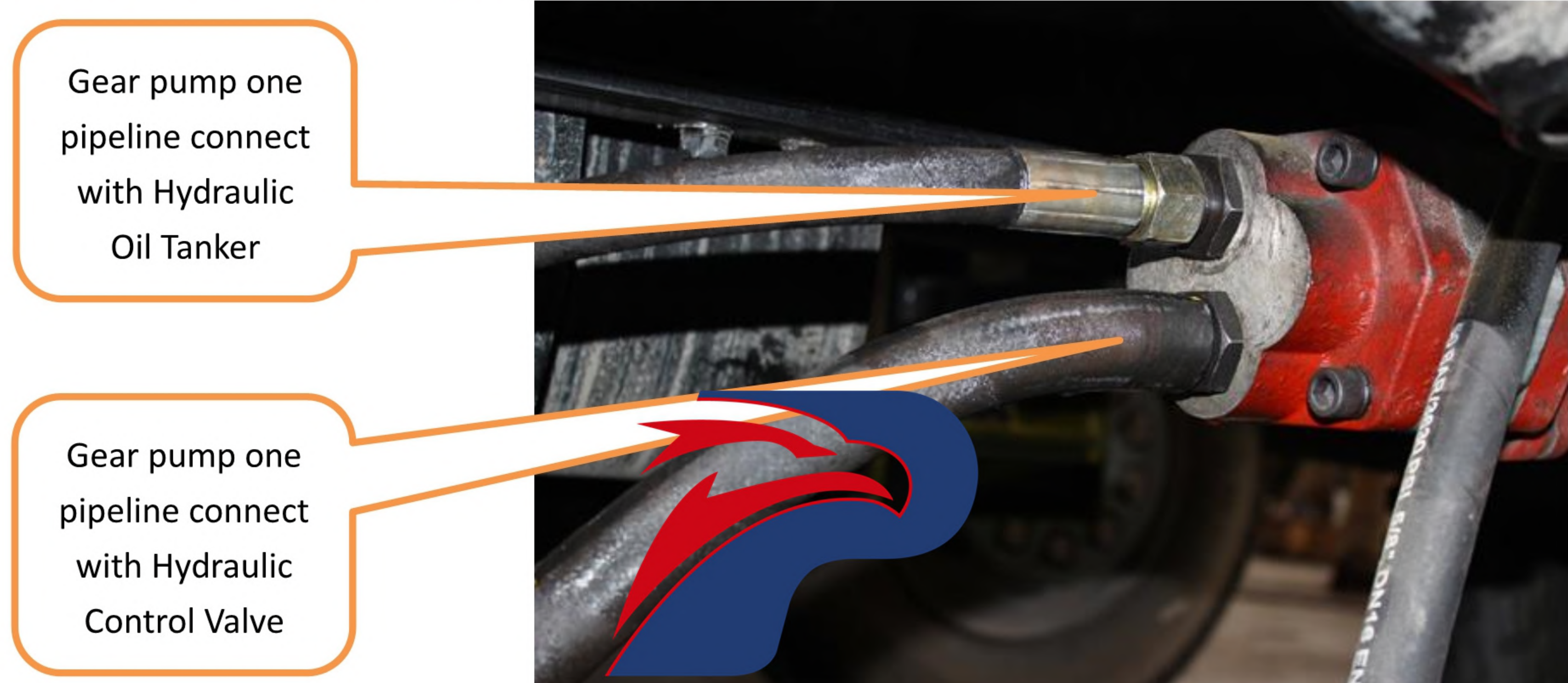
www.isuzutruckscn.com

Side Fence Bracket

2. Install the **Gear Pump** to get power from ISUZU NQR truck chassis

Hydraulic Oil Tank can be installed at suitable position.

Hydraulic Control Valve installed at rear of the platform.



POWERSTAR

3. Make sure all Hydraulic Pipelines well connected.

- Install the Hydraulic oil tank at suitable position. Top is Oil Returning Hole, Below Hole connect with Gear Pump Inlet, so hydraulic oil have power to move hydraulic cylinders working.



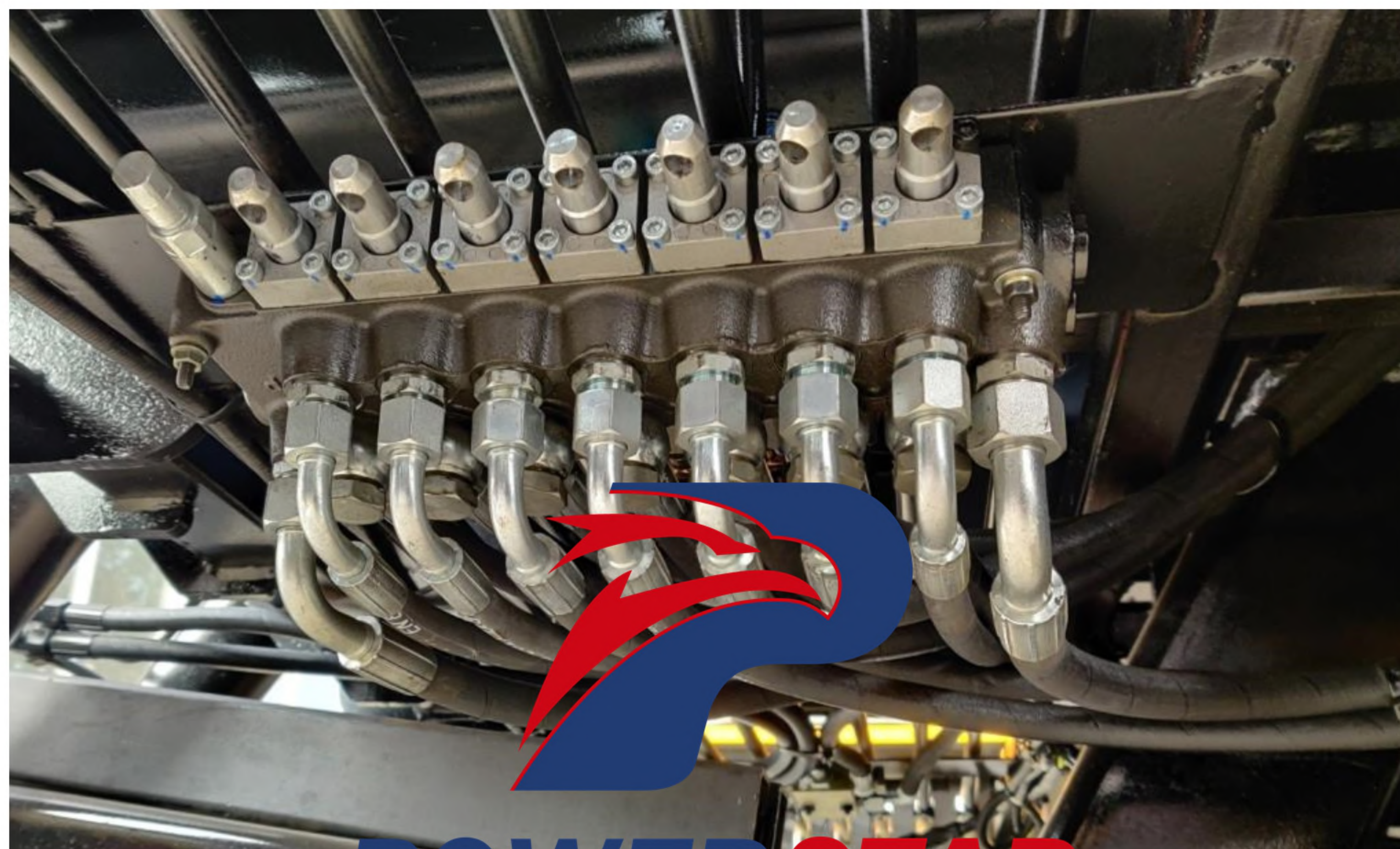
- Connect all pipelines properly:

Hydraulic Oil Tank below Outlet → Connect with Gear Pump Inlet (Gear Pump connect with NQR PTO) → Gear Pump Outlet Hydraulic Pipeline → Hydraulic Control Valve → All Hydraulic Cylinders (Wrecker Platform—Telescopic Hydraulic Cylinder; Rear Platform—Telescopic Hydraulic Cylinder; Rear Lifting Part—Telescopic Hydraulic Cylinder)

www.isuzutrucks.cn

Hydraulic Control Valve:

Pipeline connected to control all hydraulic cylinders as control joystick showing:

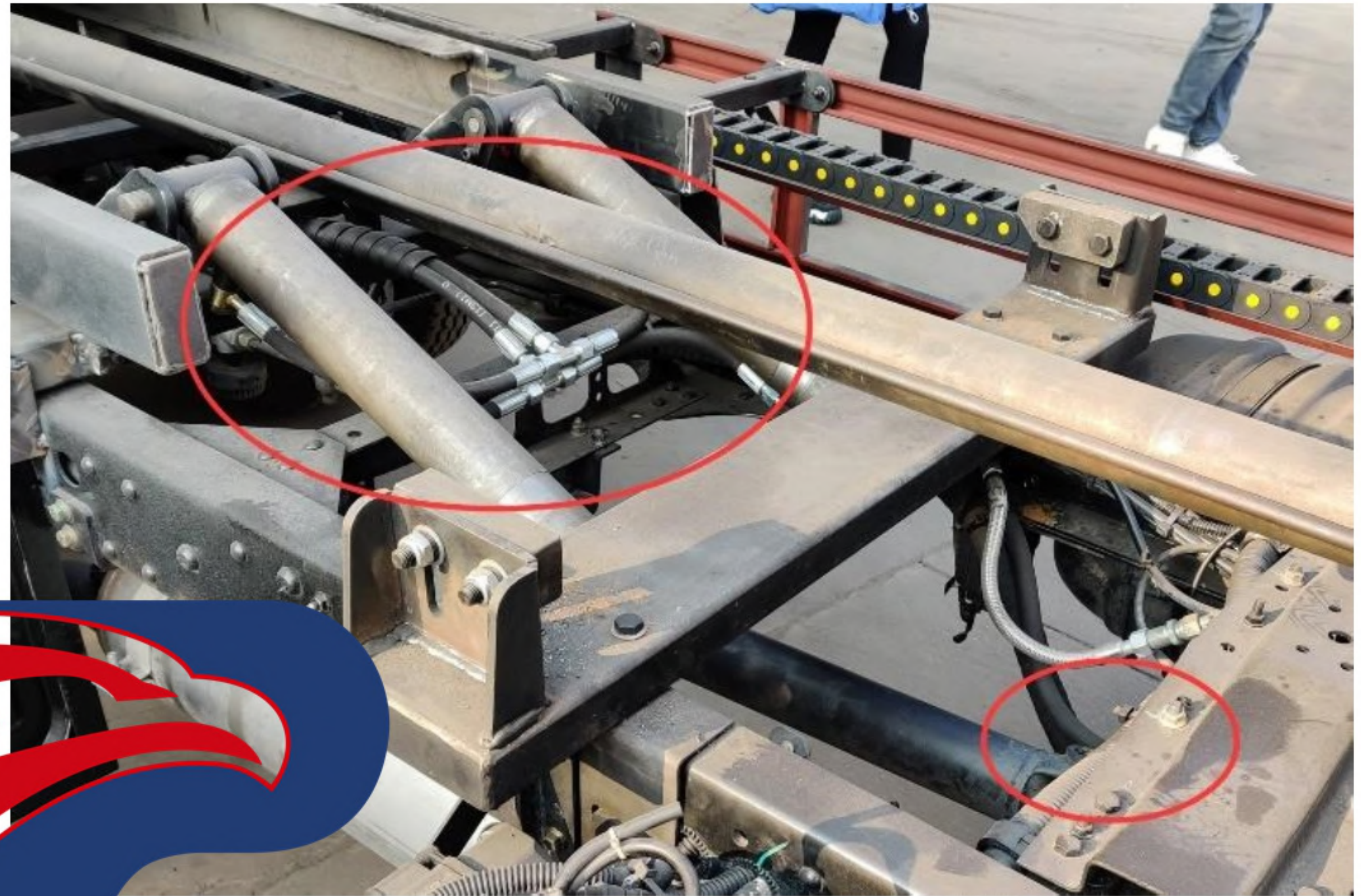
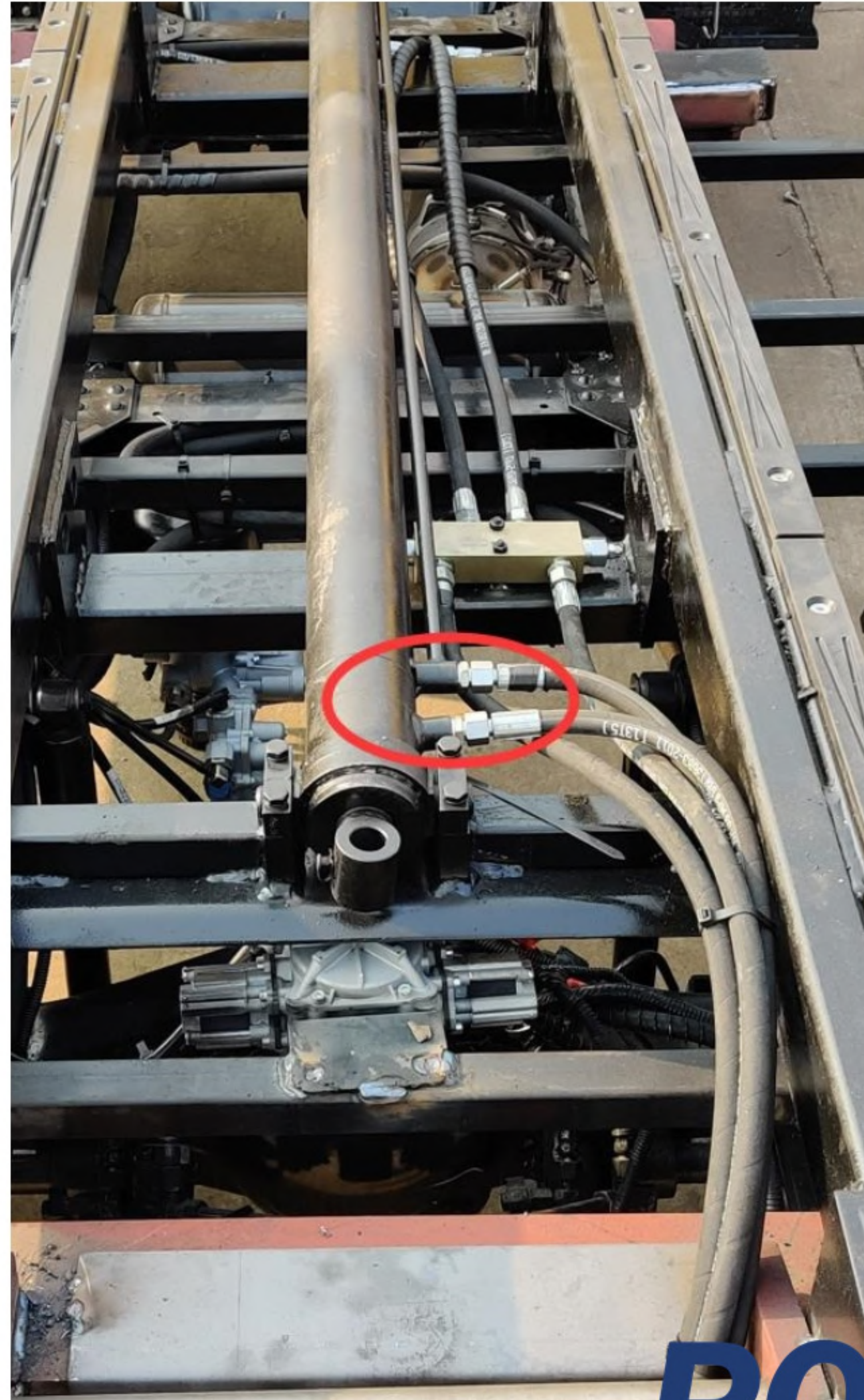


POWERSTAR



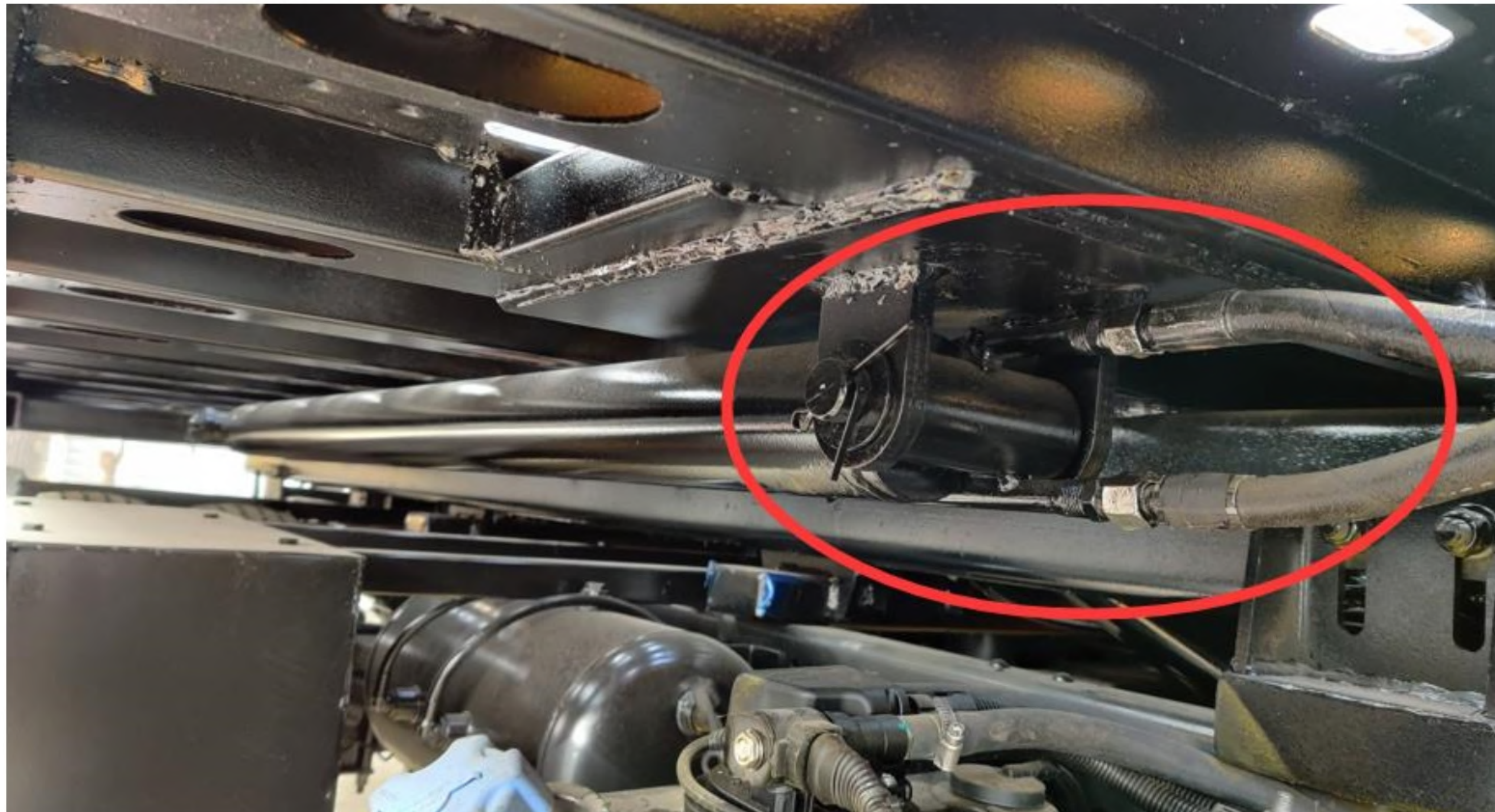
Items	NAME	UP POSITION	DOWN POSITION
1	Rear Platform 2	Retract Back	Extend Out
2	Rear Platform 1	Retract Back	Extend Out
3	Rear Lifting Part---Lifting & Falling	Lifting Up	Falling Down
4	Rear Lifting Part---Telescopic	Retract Back	Extend Out
5	Wrecker Platform---Lifting & Falling	Lifting Up	Falling Down
6	Wrecker Platform---Telescopic	Retract Back	Extend Out
7	Capstan	Frap Rope	Unfasten Rope

Wrecker Platform—Telescopic Hydraulic Cylinder & Lifting Hydraulic Cylinder;



POWERSTAR

Rear Platform—Telescopic Hydraulic Cylinder;

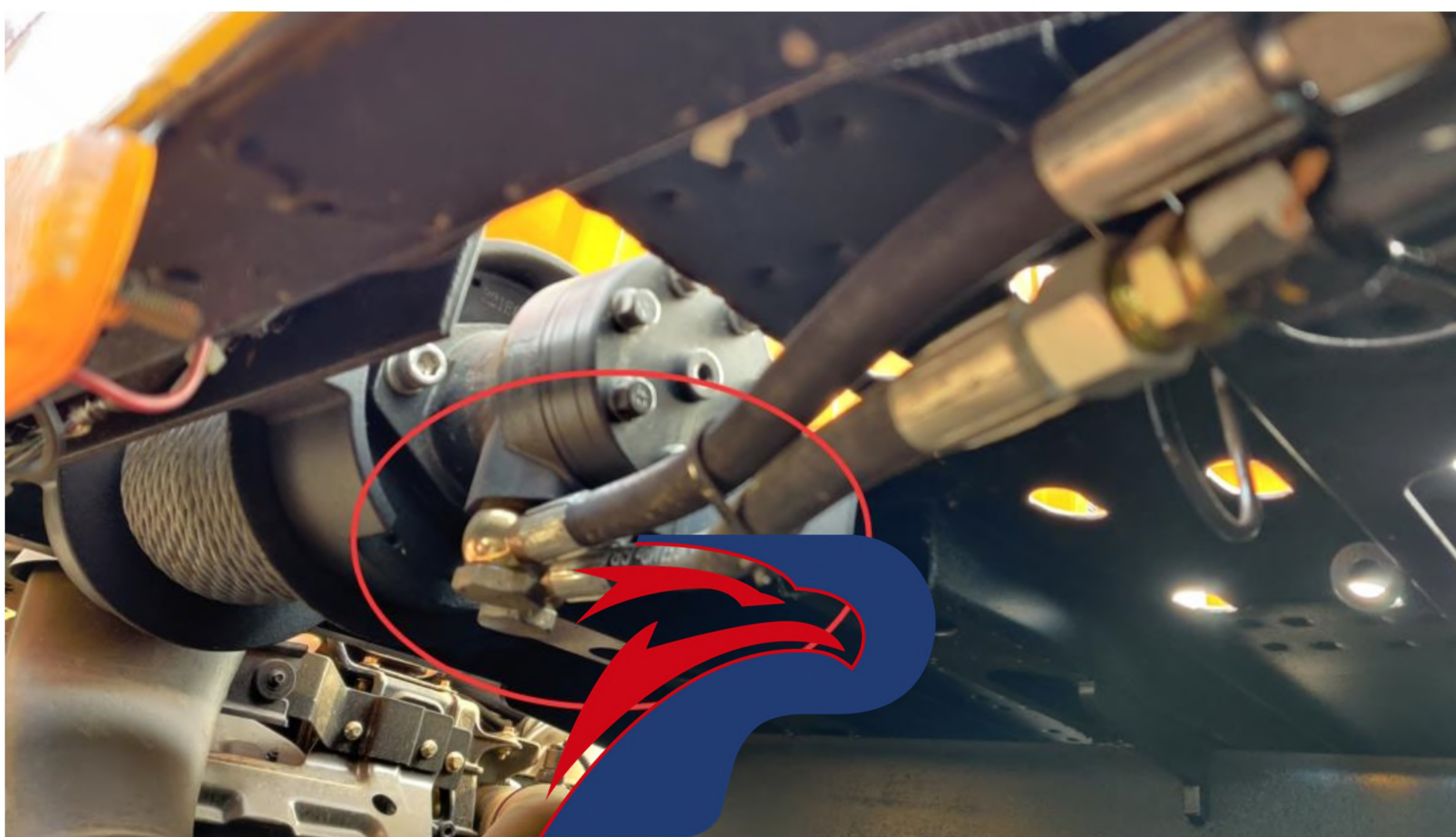


Rear Lifting Part—Telescopic Hydraulic Cylinder & Lifting Hydraulic Cylinder;



www.isuzutrucks.cn.com

Capstan as below;



POWERSTAR

4. During connect the hydraulic cylinder, make sure Wrecker Platform well connected with Auxiliary Frame

Well installed should be like this model



Auxiliary Frame put into the Wrecker Platform **Sliding Rail**, add some lubricant



The Telescopic Hydraulic Cylinder connect with Wrecker Platform

www.isuzutrucks.cn.com

5. The well assembly slide wrecker truck showing as below picture

Hydraulic Oil Tank final position depend on



Hydraulic Oil Tanker installed below platform

Hydraulic Control Valve Protected by Operation Panel

POWERSTAR

6. Platform installed on the auxiliary frame, connect with the Main hydraulic cylinder



Two lifting hydraulic cylinder on this place

Main Hydraulic Cylinder

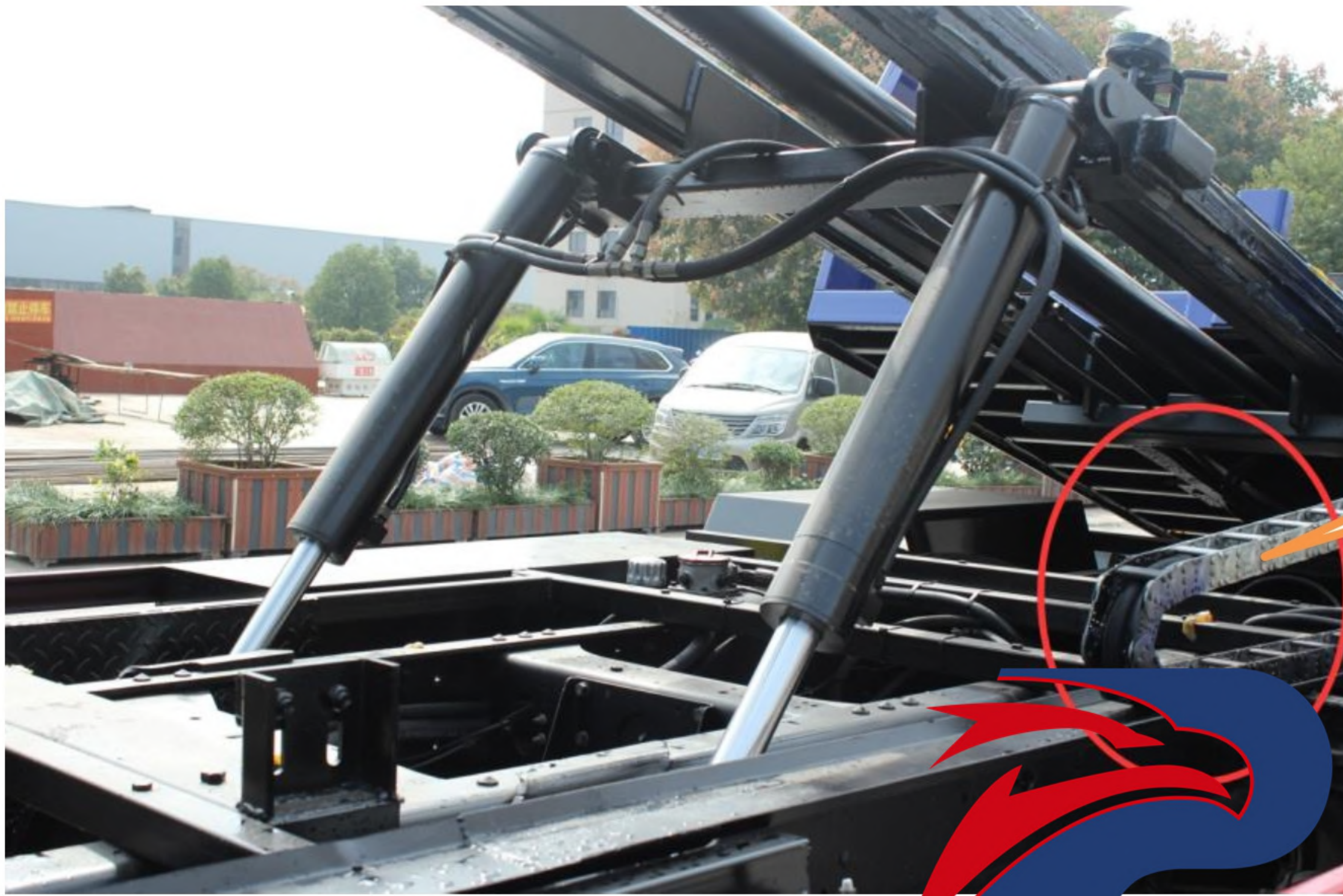


Main Hydraulic Cylinder on this place

How does the platform working

www.isuzutruckscn.com

Two lifting hydraulic cylinder on this place



Hydraulic pipelines covered with Hinges

7. Connection the two sets 1200mm length rear hydraulic platform with Hydraulic cylinder, Control Valve, pipelines. etc

POWERSTAR



1200mm length Hydraulic platform installation

8. Connection the Hydraulic Capstan with Hydraulic pipeline, Control Valve. etc



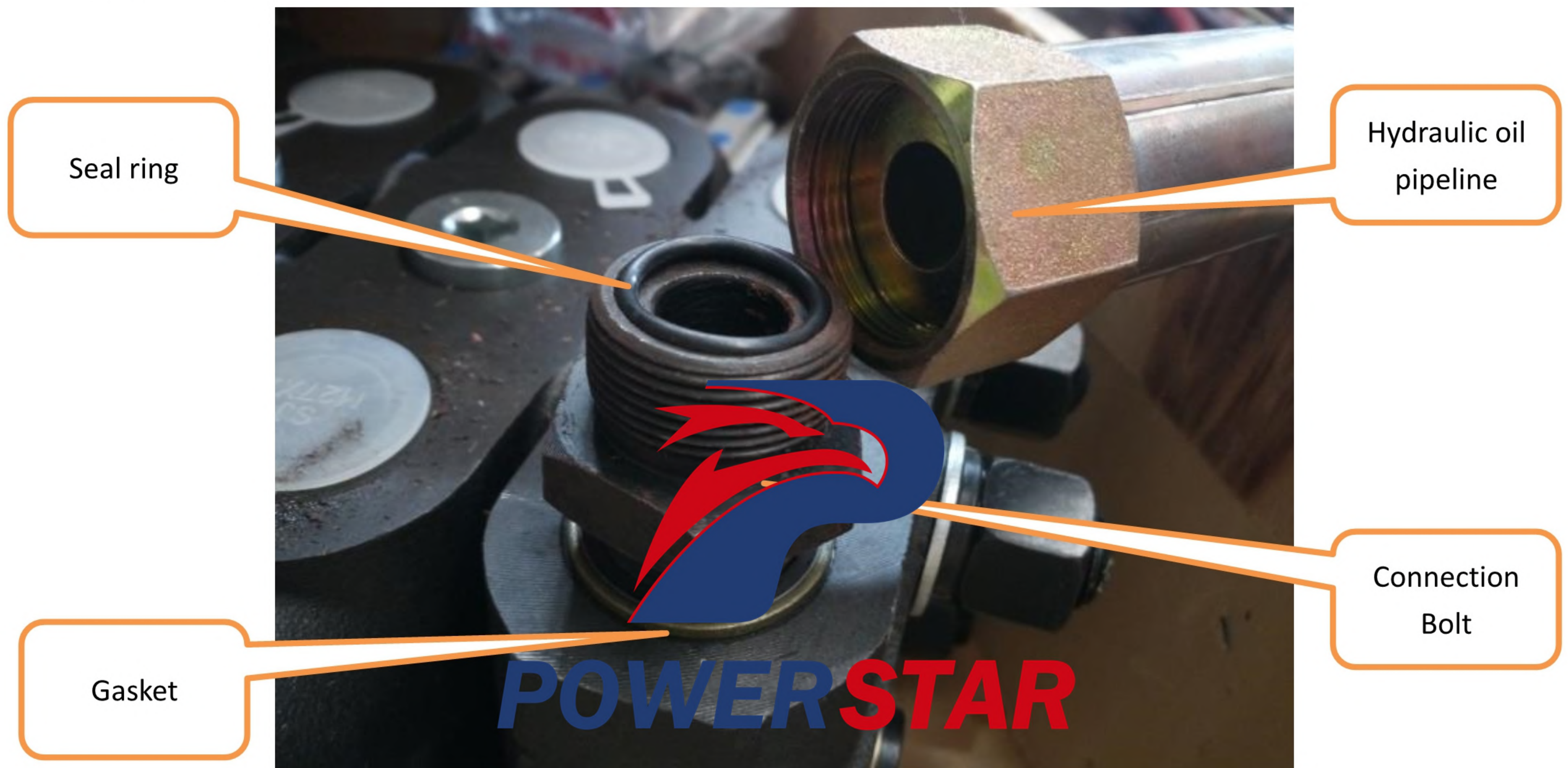
Hydraulic pipelines covered with Hinges

Hydraulic Capstan connect with hydraulic oil pipeline

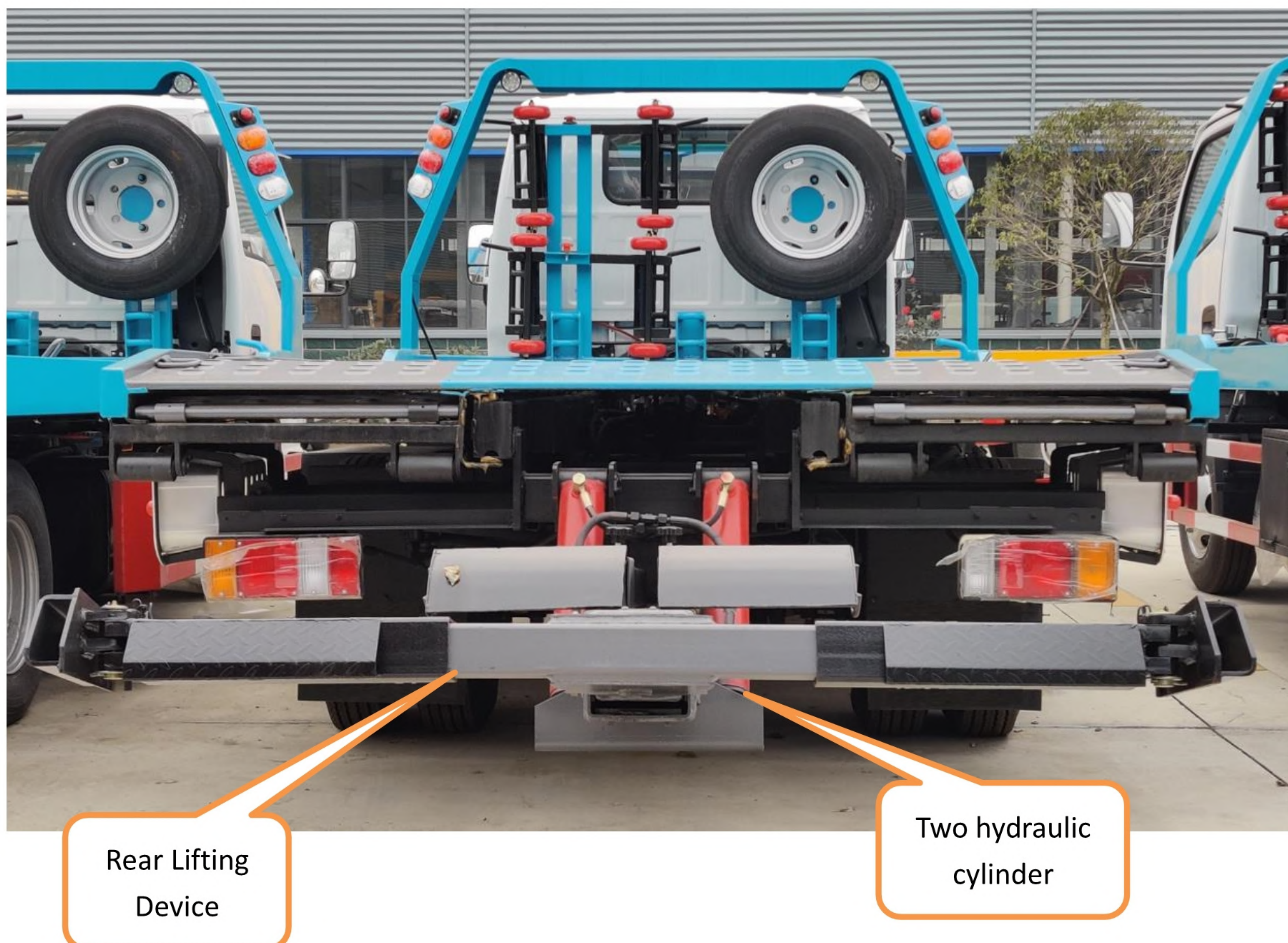
www.isuzutruckscn.com

Please note Hydraulic Oil Pipeline connection as below:

Front bottom: Gasket---Connection Bolt---Seal ring---Hydraulic oil pipeline



9. Rear Lifting Device installation



www.isuzutrucks.cn.com